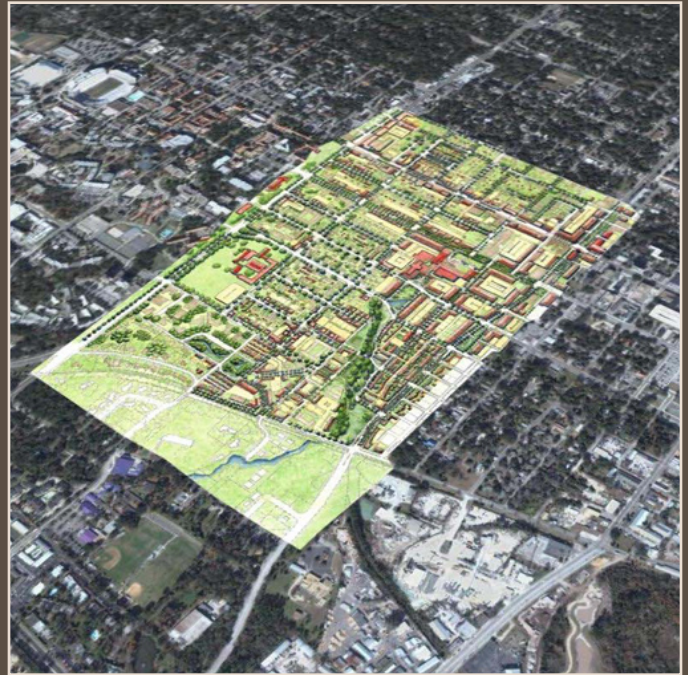


DOVER, KOHL & PARTNERS

t o w n p l a n n i n g



Downtown Kendall – Miami-Dade County



University Heights – Gainesville

Google Earth Users: To view these proposals for urbanism in Florida in their context, please click on the links below. You will be taken to a project profile which also contains a Google Earth Location link. Then, see the next page for instructions on how to place your own projects in Google Earth.

Biscayne Shores - Miami

Callery Judge Grove - Loxahatchee

Cape Coral : A Downtown Plan

Davie Downtown Plan

Downtown Kendall - Miami-Dade County

Draper Lake - South Walton County

Fort Pierce

Lake Okeechobee Regional Plan

Magnolia Springs - Lynn Haven

Miami CRA

Miami Lakes Town Center

Miami Springs Downtown Plan

MLK & VSS Boulevards Plan - Fort Myers

Old San Carlos Boulevard - Fort Myers Beach

Park Avenue - Winter Park

Parramore Heritage District - Orlando

Seven Cities - The U.S. 1 Corridor

South Miami Hometown Plan

Starkey Ranch Town Center - Odessa

University Heights - Gainesville

Waterfront Quarter - Jupiter

Winter Springs Town Center

DOVER, KOHL & PARTNERS

t o w n p l a n n i n g

Google Earth Project Mapping Instructions

Note: All teal text is project specific and must be modified.

1) Plan Graphic Preparation

In order to place a plan graphic into Google Earth it must first be prepared for insertion. Preparation involves trimming the edges of the plan to make the interface between the plan and the Google Earth backdrop as seamless as possible. This process requires basic knowledge of Photoshop image editing.

- a) Open the plan graphic in Photoshop
- b) Duplicate the background layer and delete the original layer (the original layer is usually locked and won't allow white space to be deleted)
- c) Delete all of the white space (how carefully the white space is deleted affects how the plan will look once it is dropped into Google Earth)
- d) Once that is complete, crop extra space and resize the plan to a maximum of 2000 pixels tall or wide. Do this by using the Fit Image command. It is located under File>Automate>Fit Image. Enter 2000 pixels in each of the boxes and the image will be resized.
- e) Save the plan as a .png file. Select "None" for .png options.

2) Add Content to Google Earth on Your Computer

A) Add the Plan Graphic

- a) Identify project site within Google Earth
- b) Add an image overlay. You can do this by going to Add>Image Overlay, or by pressing Ctrl+Shift+O
- c) Fill in the "Name" box with information below:

Name

Project Name – City, State Abbreviation

Ex. Downtown Kendall – Miami, FL

- d) In the "Link" box, browse to the .png file that you created of the plan graphic
- e) Size and position the plan graphic in the correct location on the map. Use the "Shift" key prior to stretching the corners of the plan graphic to maintain the proportions the plan graphic.
- f) In the "Description" portion of the dialog box for the image overlay, use the following information:

Description (Insert the following text)

<HR></H3><H3 align=center> Project Name – City, State Abbreviation

</H3>

<P align=left>Project description.

<P align=center>Click here for more information on New Urbanism in Florida</P>

DOVER, KOHL & PARTNERS

t o w n p l a n n i n g

B) Add the Placemark

- Add a placemark. You can do this by going to Add>Placemark, or by pressing Ctrl+Shift+P.
- Position the placemark above the plan graphic. Zoom in and out to see how the placemark reacts and position it accordingly.
- In the dialog box for the placemark, use the following information:

Name

Project Name – City, State Abbreviation

Ex. Downtown Kendall – Miami, FL

Description

<HR></H3><H3 align=center> Project Name – City, State Abbreviation

</H3>

<P align=left>Project description.

<P align=center>Click here for more information on New Urbanism in Florida</P>

C) Save the final .kmz file

After completing all of the above steps you should have two new items in your My Places section of Google Earth. One is the image overlay and the other is the placemark. When the placemark is clicked it should bring up an information box. Always check that all the links contained there are functional and the information box is displayed properly.

- Right-click on My Places and go to Add>Folder (or use CTRL+Shift+N). Name the folder with the project name you used earlier.
- In the dialog box for the new folder, use the following information:

Name

Project Name – City, State Abbreviation

Ex. Downtown Kendall – Miami, FL

Description

<HR></H3><H3 align=center> Project Name – City, State Abbreviation

</H3>

<P align=left>Project description.

<P align=center>Click here for more information on New Urbanism in Florida</P>

- Drag both the image overlay and the placemark into the folder you just created.
- Right-click and go to “Properties” of the new folder.
- Uncheck the box next to “Allow this folder to be expanded.”
- Right-click on the folder and go to “Save As...” This is your final .kmz file.

Now that a functional Google Earth .kmz file has been created, it can be shared with others in a variety of ways. You may choose to host .kmz files on your own website, share them via email or upload them to the Google Earth’s online Community. Posting your file to the Google Earth Community will allow it to be searchable by Google Earth Community users.